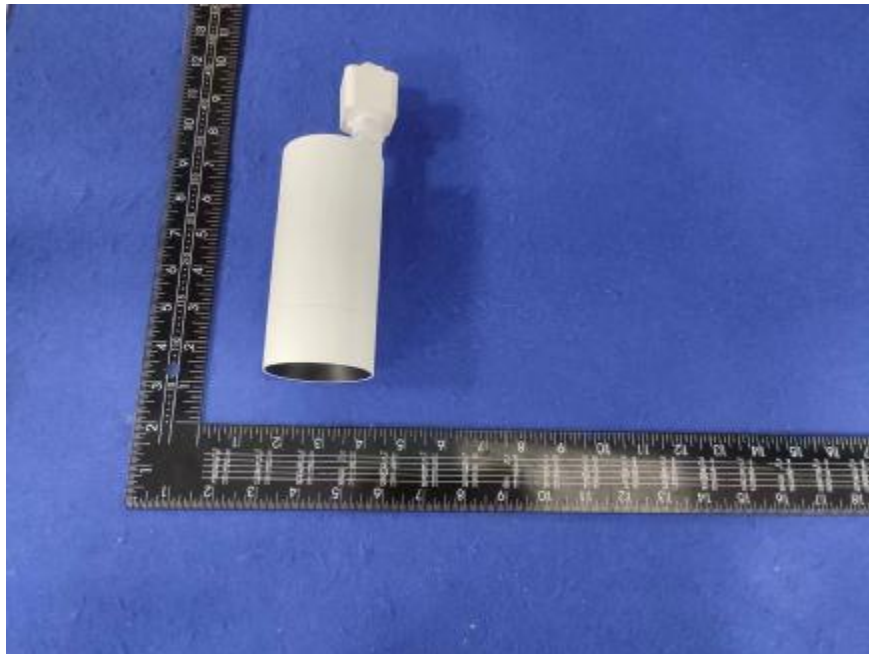


Luminaire Photograph



Light Output Ratio:	85.1%	
Luminaire Power:	13.45 W	
SHR Nominal:	0.00	Calculated using the TM5
SHR Maximum:	0.30	fine grid method.

C Range: 0 - 360DEG
C Interval: 30.0DEG
Test Speed: HIGH
Temperature: 25.3 °C
Operators: zoe
Test Date: 2023-6-5

Range: 0 - 180DEG
Interval: 1.0DEG
Test System: EVERFINE GO-SPEX500_V1 SYSTEM V2.00.461
Humidity: 65.0%
Test Distance: 3.160m [K=1.0000]
Remarks: LAMP: BXRE-30H1000-A-83 Ra: 97
LENS: PM-0132A 24R
DRIVER: RISE DRIVER 350mA
30minutes warm-up

LUMINOUS INTENSITY DISTRIBUTION DIAGRAM

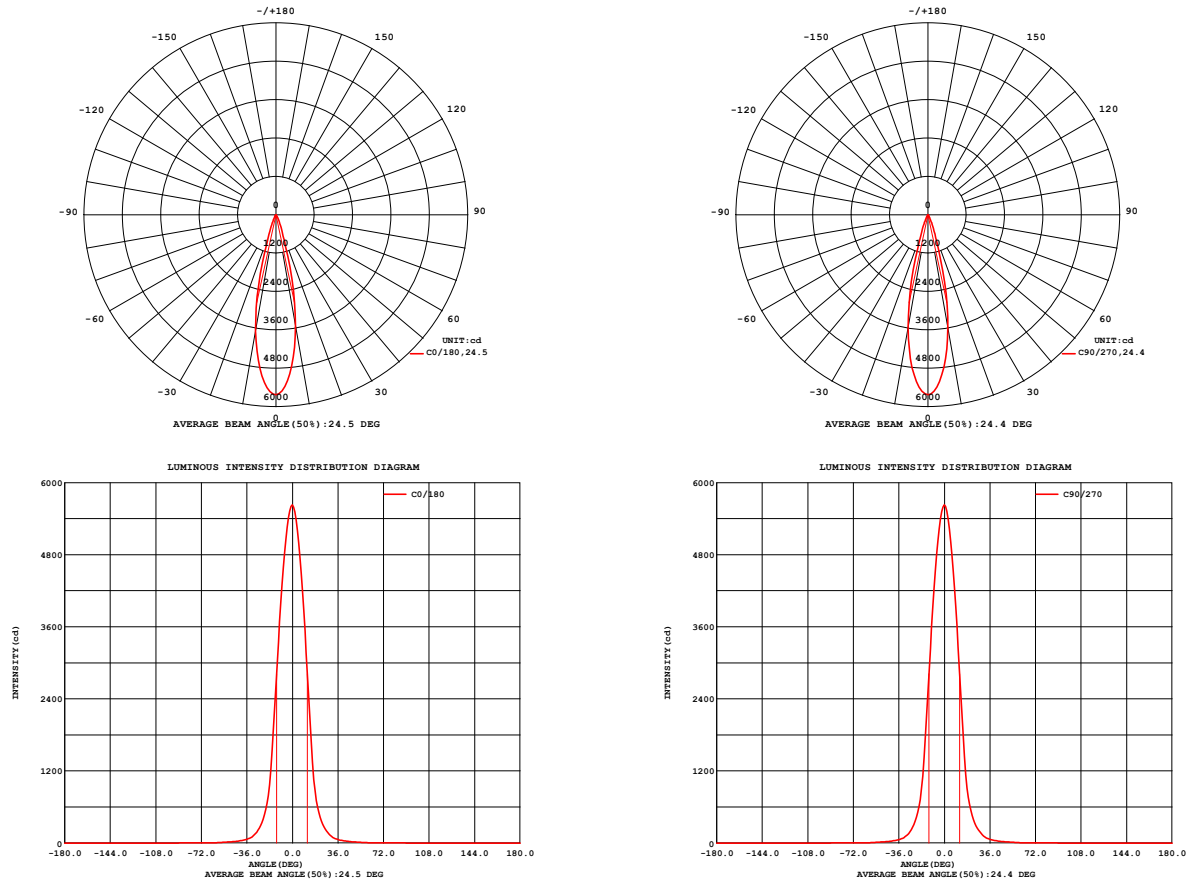


Fig. C0/C180

Fig. C90/C270

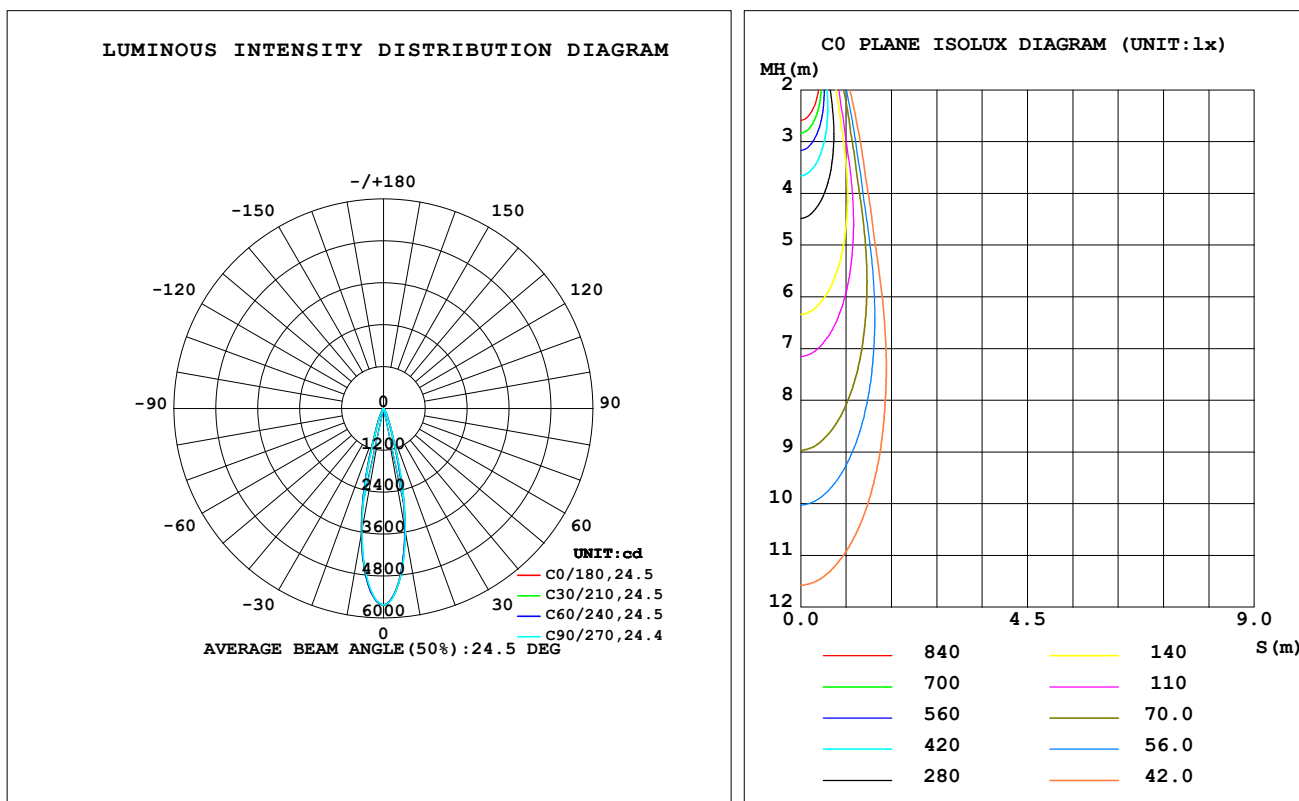
C Range: 0 - 360DEG
C Interval: 30.0DEG
Test Speed: HIGH
Temperature: 25.3 °C
Operators: zoe
Test Date: 2023-6-5

Range: 0 - 180DEG
Interval: 1.0DEG
Test System: EVERFINE GO-SPEX500_V1 SYSTEM V2.00.461
Humidity: 65.0%
Test Distance: 3.160m [K=1.0000]
Remarks: LAMP: BXRE-30H1000-A-83 Ra: 97
LENS: PM-0132A 24R
DRIVER: RISE DRIVER 350mA
30minutes warm-up

LUMINAIRE PHOTOMETRIC TEST REPORT

Test:U:120.09V I:0.1136A P:13.446W PF:0.9834 Freq:59.98Hz Lamp Flux:1339.9x1 lm		
NAME: 2319.201-H3AM-350	TYPE:	WEIGHT:
SPEC.: 3000K	DIM.:	SERIAL No.: 2306050738
MFR.: RISE	SUR.: 0.002826m2	Shielding Angle:

DATA OF LAMP		PHOTOMETRIC DATA Eff: 84.81 lm/W			
MODEL	Brideglux	I _{max} (cd)	5627	S/MH (C0/180)	0.41
NOMINAL POWER (W)	13	LOR (%)	85.1	S/MH (C90/270)	0.39
RATED VOLTAGE (V)	120	TOTAL FLUX (lm)	1140.4	UP, DN (C0-180)	0.0, 42.8
NOMINAL FLUX (lm)	1339.9	CIE CLASS	DIRECT	UP, DN (C180-360)	0.0, 42.3
LAMPS INSIDE	1	up (%)	0.0	CIBSE SHR NOM	0.00
TEST VOLTAGE (V)	120	down (%)	85.1	CIBSE SHR MAX	0.30



C Range: 0 - 360DEG
C Interval: 30.0DEG
Test Speed: HIGH
Temperature: 25.3 °C
Operators: zoe
Test Date: 2023-6-5

Range: 0 - 180DEG
Interval: 1.0DEG
Test System: EVERFINE GO-SPEX500_V1 SYSTEM V2.00.461
Humidity: 65.0%
Test Distance: 3.160m [K=1.0000]
Remarks: LAMP: BXRE-30H1000-A-83 Ra: 97
LENS: PM-0132A 24R
DRIVER: RISE DRIVER 350mA
30minutes warm-up

ZONAL FLUX DIAGRAM

ZONAL FLUX DIAGRAM:

	C0	C45	C90	C135	C180	C225	C270	C315		zone	total	%lum,lamp
10	3531	3564	3602	3672	3687	3642	3586	3517	0- 10	434.0	434.0	38.1,32.4
20	597.9	631.9	643.6	669.4	655.8	637.0	604.6	599.5	10- 20	491.5	925.5	81.2,69.1
30	125.9	135.0	136.8	136.9	133.7	125.3	119.0	119.1	20- 30	138.3	1064	93.3,79.4
40	38.97	40.41	41.11	41.73	41.36	39.08	37.99	37.18	30- 40	44.41	1108	97.2,82.7
50	17.09	18.15	18.09	18.38	17.92	17.32	16.67	16.40	40- 50	20.38	1129	99.8,84.2
60	4.576	4.952	5.186	5.290	4.896	4.409	4.090	4.209	50- 60	9.648	1138	99.8,84.9
70	0.8277	0.8675	0.9471	0.9303	0.8757	0.8136	0.8086	0.7995	60- 70	1.804	1140	100,85.1
80	0.0347	0.0178	0.0276	0.0178	0.0307	0.0186	0.0254	0.0138	70- 80	0.3254	1140	100,85.1
90	0	0	0	0	0	0	0	0	80- 90	0.0181	1140	100,85.1
100	0	0	0	0	0	0	0	0	90-100	0	1140	100,85.1
110	0	0	0	0	0	0	0	0	100-110	0	1140	100,85.1
120	0	0	0	0	0	0	0	0	110-120	0	1140	100,85.1
130	0	0	0	0	0	0	0	0	120-130	0	1140	100,85.1
140	0	0	0	0	0	0	0	0	130-140	0	1140	100,85.1
150	0	0	0	0	0	0	0	0	140-150	0	1140	100,85.1
160	0	0	0	0	0	0	0	0	150-160	0	1140	100,85.1
170	0	0	0	0	0	0	0	0	160-170	0	1140	100,85.1
180	0	0	0	0	0	0	0	0	170-180	0	1140	100,85.1
DEG	LUMINOUS INTENSITY:cd									UNIT:lm		

C Range: 0 - 360DEG
C Interval: 30.0DEG
Test Speed: HIGH
Temperature:25.3℃
Operators:zoe
Test Date:2023-6-5

Range: 0 - 180DEG
Interval: 1.0DEG
Test System:EVERFINE GO-SPEX500_V1 SYSTEM V2.00.461
Humidity:65.0%
Test Distance:3.160m [K=1.0000]
Remarks: LAMP:BXRE-30H1000-A-83 Ra:97
LENS:PM-0132A 24R
DRIVER: RISE DRIVER 350mA
30minutes warm-up

LUMINANCE LIMITATION CURVES

Test:U:120.09V I:0.1136A P:13.446W PF:0.9834 Freq:59.98Hz
Lamp Flux:1339.9x1 lm

NAME: 2319.201-H3AM-350

TYPE:

WEIGHT:

SPEC.: 3000K

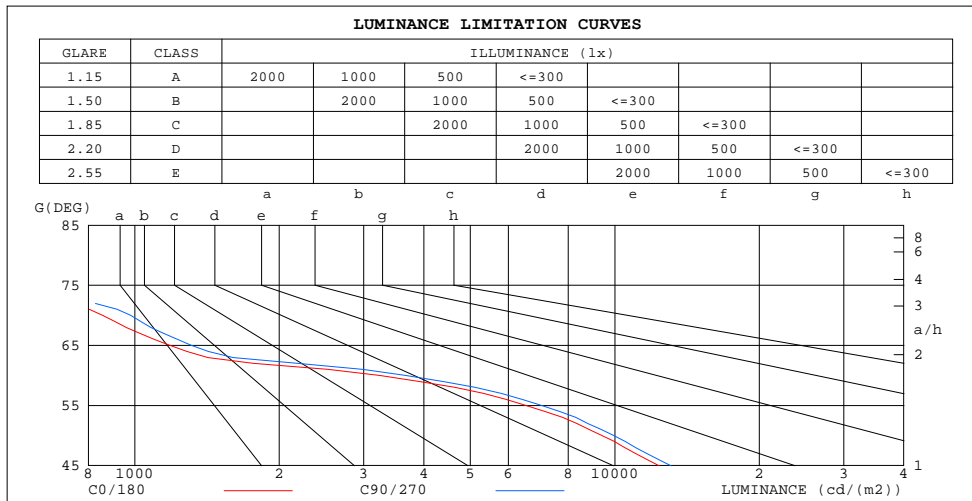
DIM.:

SERIAL No.: 2306050738

MFR.: RISE

SUR.: 0.002826m2

Shielding Angle:



LUMINANCE cd/(m2)		
G(180)	C0/180	C90/270
85	118	113
80	71	56
75	242	366
70	857	980
65	1184	1313
60	3240	3670
55	6541	7051
50	9410	9959
45	12368	13081

C Range: 0 - 360DEG
C Interval: 30.0DEG
Test Speed: HIGH
Temperature:25.3℃
Operators:zoe
Test Date:2023-6-5

Range: 0 - 180DEG
Interval: 1.0DEG
Test System:EVERFINE GO-SPEX500_V1 SYSTEM V2.00.461
Humidity:65.0%
Test Distance:3.160m [K=1.0000]
Remarks: LAMP:BXRE-30H1000-A-83 Ra:97
LENS:PM-0132A 24R
DRIVER: RISE DRIVER 350mA
30minutes warm-up

CU AND LUMINAIRE BUDGETARY ESTIMATE DIAGRAM

Test:U:120.09V I:0.1136A P:13.446W PF:0.9834 Freq:59.98Hz
Lamp Flux:1339.9x1 lm

NAME: 2319.201-H3AM-350

TYPE:

WEIGHT:

SPEC.: 3000K

DIM.:

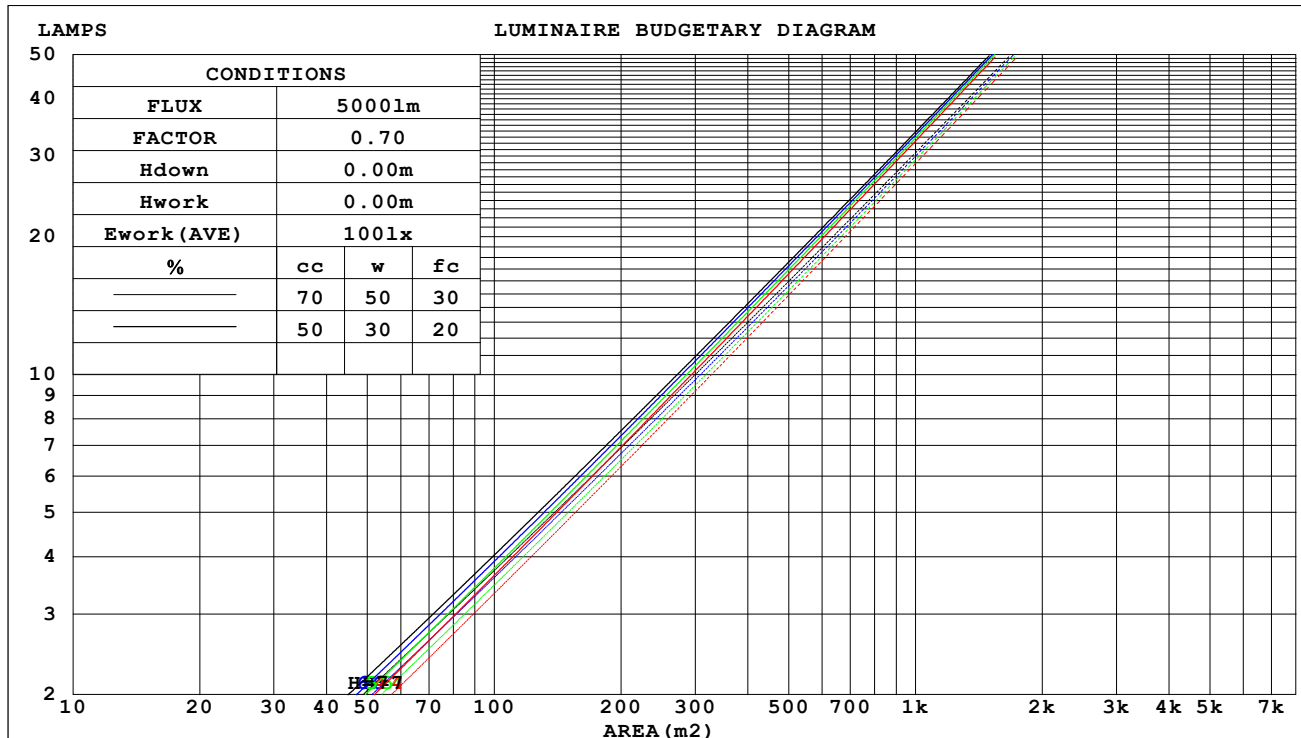
SERIAL No.: 2306050738

MFR.: RISE

SUR.: 0.002826m2

Shielding Angle:

cc	80%			70%			50%			30%			10%			0
w	50%	30%	10%	50%	30%	10%	50%	30%	10%	50%	30%	10%	50%	30%	10%	0
fc	20%			20%			20%			20%			20%			0
RCR	RCR:Room Cavity Ratio															



C Range: 0 - 360DEG
C Interval: 30.0DEG
Test Speed: HIGH
Temperature:25.3℃
Operators:zoe
Test Date:2023-6-5

Range: 0 - 180DEG
Interval: 1.0DEG
Test System:EVERFINE GO-SPEX500_V1 SYSTEM V2.00.461
Humidity:65.0%
Test Distance:3.160m [K=1.0000]
Remarks: LAMP:BXRE-30H1000-A-83 Ra:97
LENS:PM-0132A 24R
DRIVER: RISE DRIVER 350mA
30minutes warm-up

WEC AND CCEC

Test:U:120.09V I:0.1136A P:13.446W PF:0.9834 Freq:59.98Hz Lamp Flux:1339.9x1 lm		
NAME: 2319.201-H3AM-350	TYPE:	WEIGHT:
SPEC.: 3000K	DIM.:	SERIAL No.: 2306050738
MFR.: RISE	SUR.: 0.002826m2	Shielding Angle:

cc	80%			70%			50%			30%			10%			0
w	50%	30%	10%	50%	30%	10%	50%	30%	10%	50%	30%	10%	50%	30%	10%	0
fc	20%			20%			20%			20%			20%			0
RCR	RCR:Room Cavity Ratio						Wall Exitance Coefficients (WEC)									
0.0																
1.0	.116	.066	.021	.110	.063	.020	.100	.057	.018	.090	.052	.017	.081	.047	.015	
2.0	.108	.059	.018	.103	.057	.017	.094	.052	.016	.086	.048	.015	.079	.045	.014	
3.0	.100	.053	.016	.097	.052	.016	.089	.048	.015	.083	.045	.014	.076	.042	.013	
4.0	.094	.049	.014	.091	.048	.014	.085	.045	.013	.079	.042	.013	.074	.040	.012	
5.0	.088	.045	.013	.086	.044	.013	.081	.042	.012	.076	.040	.012	.071	.038	.011	
6.0	.084	.042	.012	.081	.041	.012	.077	.039	.011	.073	.038	.011	.069	.036	.011	
7.0	.079	.039	.011	.077	.038	.011	.073	.037	.011	.070	.036	.010	.066	.034	.010	
8.0	.075	.037	.010	.074	.036	.010	.070	.035	.010	.067	.034	.010	.064	.033	.010	
9.0	.072	.035	.010	.070	.034	.010	.067	.033	.009	.065	.032	.009	.062	.031	.009	
10.0	.069	.033	.009	.067	.033	.009	.065	.032	.009	.062	.031	.009	.060	.030	.009	

cc	80%			70%			50%			30%			10%			0	
w	50%	30%	10%	50%	30%	10%	50%	30%	10%	50%	30%	10%	50%	30%	10%	0	
fc	20%			20%			20%			20%			20%			0	
RCR	RCR:Room Cavity Ratio						Ceiling Cavity Exitance Coefficients (CCEC)										
0.0	.162	.162	.162	.139	.139	.139	.095	.095	.095	.054	.054	.054	.017	.017	.017		
1.0	.143	.134	.126	.123	.115	.108	.084	.079	.075	.048	.046	.044	.015	.015	.014		
2.0	.128	.113	.100	.109	.097	.087	.075	.067	.061	.043	.039	.035	.014	.013	.012		
3.0	.115	.096	.082	.099	.083	.071	.068	.058	.050	.039	.034	.029	.013	.011	.010		
4.0	.104	.083	.067	.090	.072	.058	.062	.050	.041	.036	.029	.024	.011	.010	.008		
5.0	.095	.073	.056	.082	.063	.049	.056	.044	.034	.033	.026	.020	.011	.008	.007		
6.0	.088	.064	.047	.075	.056	.041	.052	.039	.029	.030	.023	.017	.010	.007	.006		
7.0	.081	.057	.041	.070	.050	.035	.048	.035	.025	.028	.021	.015	.009	.007	.005		
8.0	.076	.052	.035	.065	.045	.030	.045	.031	.022	.026	.019	.013	.008	.006	.004		
9.0	.071	.047	.030	.061	.041	.027	.042	.029	.019	.025	.017	.011	.008	.006	.004		
10.0	.067	.043	.027	.057	.037	.023	.040	.026	.017	.023	.015	.010	.008	.005	.003		

C Range: 0 - 360DEG
C Interval: 30.0DEG
Test Speed: HIGH
Temperature:25.3℃
Operators:zoe
Test Date:2023-6-5

Range: 0 - 180DEG
Interval: 1.0DEG
Test System:EVERFINE GO-SPEX500_V1 SYSTEM V2.00.461
Humidity:65.0%
Test Distance:3.160m [K=1.0000]
Remarks: LAMP:BXRE-30H1000-A-83 Ra:97
LENS:PM-0132A 24R
DRIVER: RISE DRIVER 350mA
30minutes warm-up

UGR(Unified Glare Rating) Table

Test:U:120.09V I:0.1136A P:13.446W PF:0.9834 Freq:59.98Hz Lamp Flux:1339.9x1 lm										
NAME: 2319.201-H3AM-350					TYPE:			WEIGHT:		
SPEC.: 3000K					DIM.:			SERIAL No.: 2306050738		
MFR.: RISE					SUR.: 0.002826m2			Shielding Angle:		
ceiling/cavity	0.7	0.7	0.5	0.5	0.3	0.7	0.7	0.5	0.5	0.3
walls	0.5	0.3	0.5	0.3	0.3	0.5	0.3	0.5	0.3	0.3
working plane	0.2	0.2	0.2	0.2	0.2	0.2	0.2	0.2	0.2	0.2
Room dimensions	Viewed crosswise					Viewed endwise				
x = 2H y = 2H	10.7	11.4	10.9	11.5	11.7	10.9	11.5	11.1	11.7	11.8
3H	10.6	11.2	10.8	11.4	11.6	10.8	11.4	11.0	11.6	11.7
4H	10.5	11.1	10.8	11.3	11.5	10.7	11.3	11.0	11.5	11.7
6H	10.4	11.0	10.7	11.2	11.4	10.6	11.2	10.9	11.4	11.6
8H	10.4	10.9	10.7	11.2	11.4	10.6	11.1	10.9	11.3	11.6
12H	10.3	10.8	10.6	11.1	11.4	10.5	11.0	10.8	11.3	11.6
4H 2H	10.6	11.2	10.8	11.4	11.6	10.8	11.3	11.0	11.5	11.8
3H	10.5	11.0	10.8	11.2	11.5	10.6	11.1	10.9	11.4	11.7
4H	10.4	10.8	10.7	11.1	11.4	10.5	11.0	10.9	11.3	11.6
6H	10.3	10.7	10.6	11.0	11.3	10.4	10.9	10.8	11.2	11.5
8H	10.2	10.6	10.6	10.9	11.3	10.4	10.8	10.8	11.1	11.5
12H	10.2	10.5	10.6	10.9	11.3	10.3	10.7	10.7	11.1	11.4
8H 4H	10.2	10.6	10.6	10.9	11.3	10.4	10.8	10.8	11.1	11.5
6H	10.1	10.4	10.5	10.8	11.2	10.3	10.6	10.7	11.0	11.4
8H	10.0	10.3	10.5	10.7	11.2	10.2	10.5	10.7	10.9	11.4
12H	10.0	10.2	10.4	10.7	11.1	10.2	10.4	10.6	10.8	11.3
12H 4H	10.2	10.5	10.6	10.9	11.3	10.3	10.7	10.7	11.1	11.4
6H	10.0	10.3	10.5	10.7	11.2	10.2	10.5	10.7	10.9	11.4
8H	10.0	10.2	10.4	10.7	11.1	10.2	10.4	10.6	10.8	11.3
Variations with the observer position at spacings(CIE Pub.117):										
S = 1.0H	+ 2.0 / - 4.2					+ 2.1 / - 3.9				
1.5H	+ 2.5 / - 2.0					+ 2.7 / - 2.1				
2.0H	+ 3.4 / - 9.7					+ 3.4 / - 9.6				

CIE Pub.117, 1340 lm Total Lamp Luminous Flux Correct (8log(F/F0) = 1.0)
Area: 0.002826 m2

C Range: 0 - 360DEG
C Interval: 30.0DEG
Test Speed: HIGH
Temperature:25.3℃
Operators:zoe
Test Date:2023-6-5

Range: 0 - 180DEG
Interval: 1.0DEG
Test System:EVERFINE GO-SPEX500_V1 SYSTEM V2.00.461
Humidity:65.0%
Test Distance:3.160m [K=1.0000]
Remarks: LAMP:BXRE-30H1000-A-83 Ra:97
LENS:PM-0132A 24R
DRIVER: RISE DRIVER 350mA
30minutes warm-up

UTILIZATION FACTORS TABLE

Test:U:120.09V I:0.1136A P:13.446W PF:0.9834 Freq:59.98Hz Lamp Flux:1339.9x1 lm		
NAME: 2319.201-H3AM-350	TYPE:	WEIGHT:
SPEC.: 3000K	DIM.:	SERIAL No.: 2306050738
MFR.: RISE	SUR.: 0.002826m2	Shielding Angle:

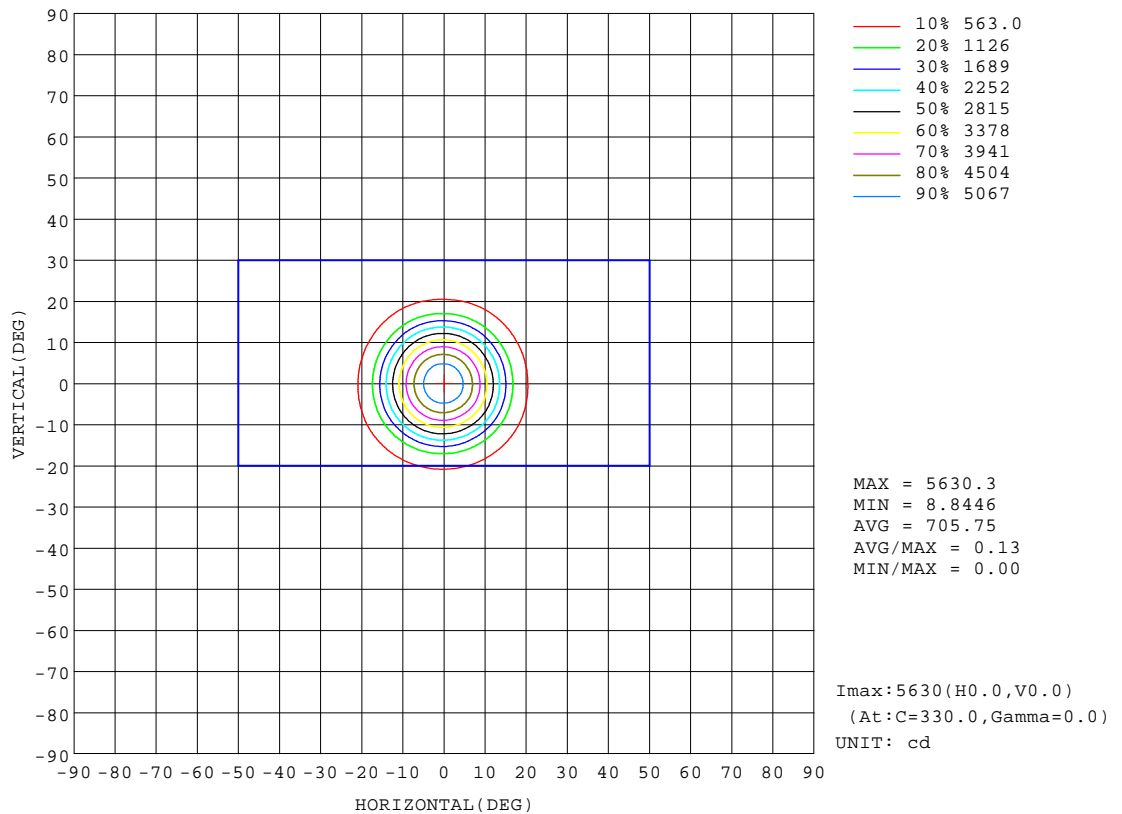
REFLECTANCE										
Ceiling	0.8	0.8	0.8	0.7	0.7	0.7	0.5	0.5	0.5	0
Walls	0.7	0.5	0.3	0.7	0.5	0.3	0.7	0.5	0.3	0
Working plane	0.2	0.2	0.2	0.2	0.2	0.2	0.2	0.2	0.2	0
ROOM INDEX	UTILIZATION FACTORS (PERCENT) $k(RI) \times RCR = 5$									
$k = 0.60$	76	71	68	76	71	68	75	71	68	65
0.80	82	78	75	82	78	75	81	77	74	72
1.00	86	81	79	85	81	78	84	81	78	75
1.25	89	85	82	88	84	82	87	83	81	78
1.50	91	87	85	90	87	84	88	86	83	80
2.00	93	90	87	92	89	87	90	87	85	81
2.50	94	91	89	93	90	88	91	88	87	82
3.00	96	93	91	94	92	90	91	90	88	83
4.00	97	95	93	96	94	92	93	91	90	84
5.00	98	97	95	97	95	94	93	92	91	85
ROOM INDEX	UF(total)									Direct
According to DIN EN 13032-2 2004			Suspended					SHRNOM = 1.25		

C Range: 0 - 360DEG
C Interval: 30.0DEG
Test Speed: HIGH
Temperature: 25.3 °C
Operators: zoe
Test Date: 2023-6-5

Range: 0 - 180DEG
Interval: 1.0DEG
Test System: EVERFINE GO-SPEX500_V1 SYSTEM V2.00.461
Humidity: 65.0%
Test Distance: 3.160m [K=1.0000]
Remarks: LAMP: BXRE-30H1000-A-83 Ra: 97
LENS: PM-0132A 24R
DRIVER: RISE DRIVER 350mA
30minutes warm-up

ISOCANDELA DIAGRAM

Test:U:120.09V I:0.1136A P:13.446W PF:0.9834 Freq:59.98Hz Lamp Flux:1339.9x1 lm		
NAME: 2319.201-H3AM-350	TYPE:	WEIGHT:
SPEC.: 3000K	DIM.:	SERIAL No.: 2306050738
MFR.: RISE	SUR.: 0.002826m2	Shielding Angle:

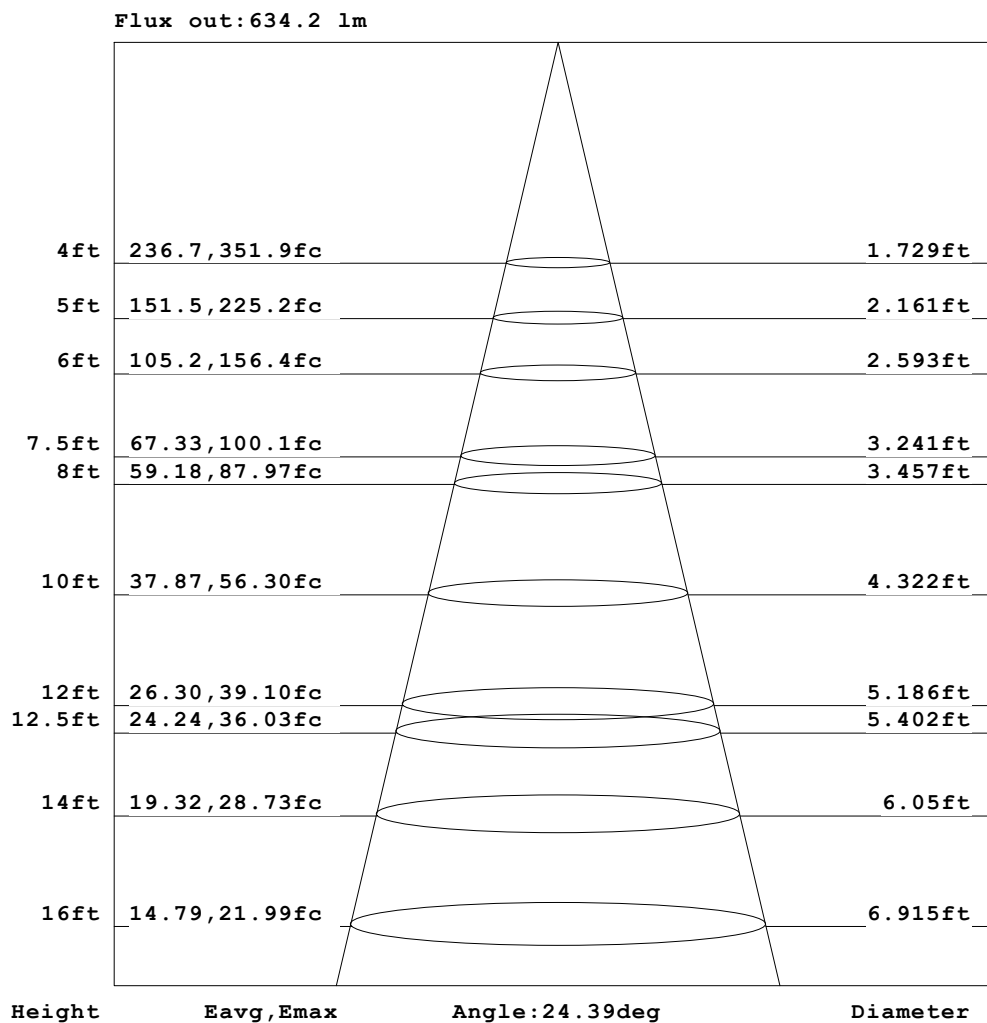


C Range: 0 - 360DEG
C Interval: 30.0DEG
Test Speed: HIGH
Temperature:25.3℃
Operators:zoe
Test Date:2023-6-5

Range: 0 - 180DEG
Interval: 1.0DEG
Test System:EVERFINE GO-SPEX500_V1 SYSTEM V2.00.461
Humidity:65.0%
Test Distance:3.160m [K=1.0000]
Remarks: LAMP:BXRE-30H1000-A-83 Ra:97
LENS:PM-0132A 24R
DRIVER: RISE DRIVER 350mA
30minutes warm-up

AAI Figure

Test:U:120.09V I:0.1136A P:13.446W PF:0.9834 Freq:59.98Hz Lamp Flux:1339.9x1 lm		
NAME: 2319.201-H3AM-350	TYPE:	WEIGHT:
SPEC.: 3000K	DIM.:	SERIAL No.: 2306050738
MFR.: RISE	SUR.: 0.002826m2	Shielding Angle:



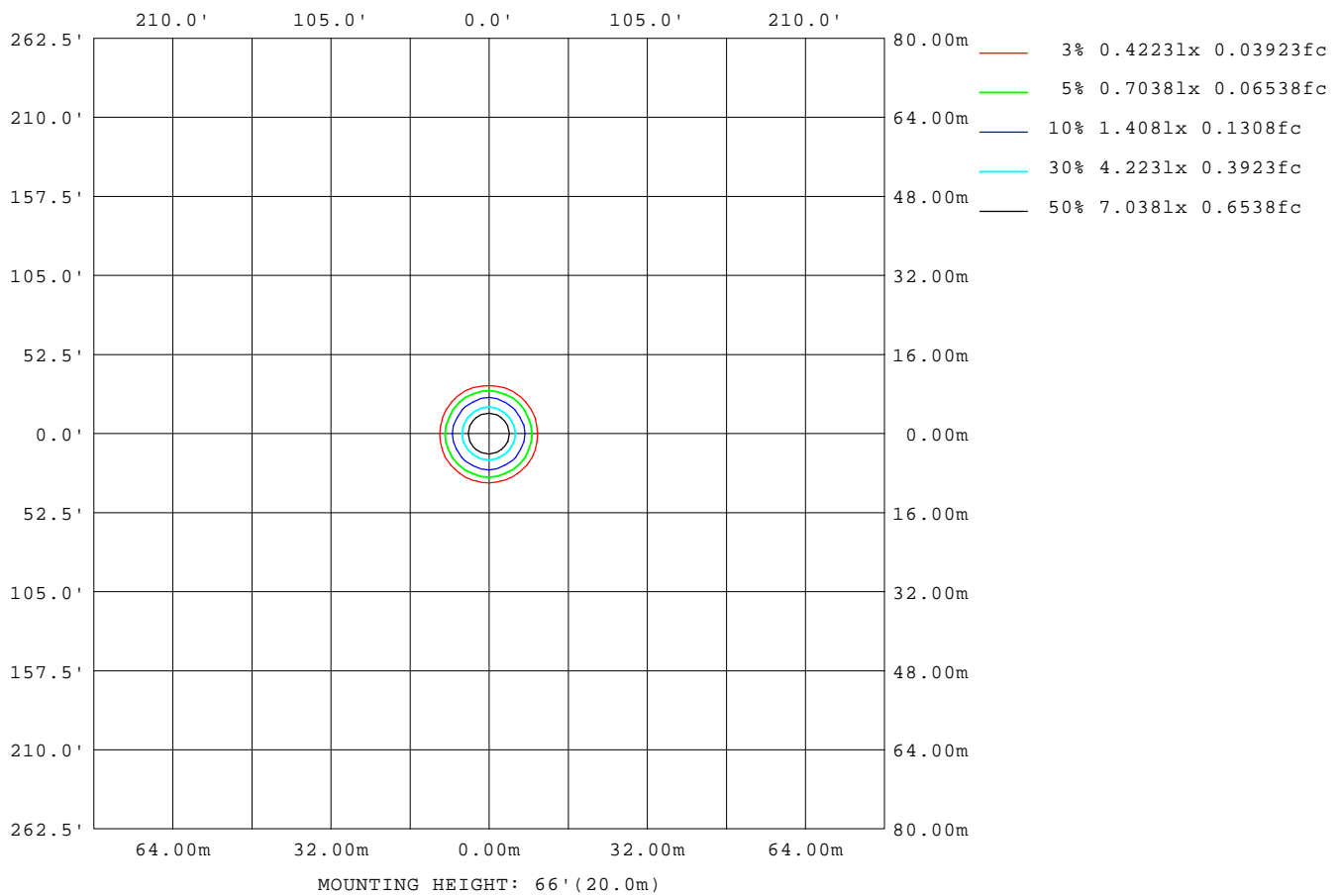
Note: The Curves indicate the illuminated area and the average illumination when the luminaire is at different distance.

C Range: 0 - 360DEG
C Interval: 30.0DEG
Test Speed: HIGH
Temperature: 25.3°C
Operators: zoe
Test Date: 2023-6-5

Range: 0 - 180DEG
Interval: 1.0DEG
Test System: EVERFINE GO-SPEX500_V1 SYSTEM V2.00.461
Humidity: 65.0%
Test Distance: 3.160m [K=1.0000]
Remarks: LAMP: BXRE-30H1000-A-83 Ra: 97
LENS: PM-0132A 24R
DRIVER: RISE DRIVER 350mA
30minutes warm-up

ISOLUX DIAGRAM

Test:U:120.09V I:0.1136A P:13.446W PF:0.9834 Freq:59.98Hz Lamp Flux:1339.9x1 lm		
NAME: 2319.201-H3AM-350	TYPE:	WEIGHT:
SPEC.: 3000K	DIM.:	SERIAL No.: 2306050738
MFR.: RISE	SUR.: 0.002826m2	Shielding Angle:



C Range: 0 - 360DEG
C Interval: 30.0DEG
Test Speed: HIGH
Temperature:25.3℃
Operators:zoe
Test Date:2023-6-5

Range: 0 - 180DEG
Interval: 1.0DEG
Test System:EVERFINE GO-SPEX500_V1 SYSTEM V2.00.461
Humidity:65.0%
Test Distance:3.160m [K=1.0000]
Remarks: LAMP:BXRE-30H1000-A-83 Ra:97
LENS:PM-0132A 24R
DRIVER: RISE DRIVER 350mA
30minutes warm-up

LED Avg.L Report

Test:U:120.09V I:0.1136A P:13.446W PF:0.9834 Freq:59.98Hz Lamp Flux:1339.9x1 lm		
NAME: 2319.201-H3AM-350	TYPE:	WEIGHT:
SPEC.: 3000K	DIM.:	SERIAL No.: 2306050738
MFR.: RISE	SUR.: 0.002826m2	Shielding Angle:

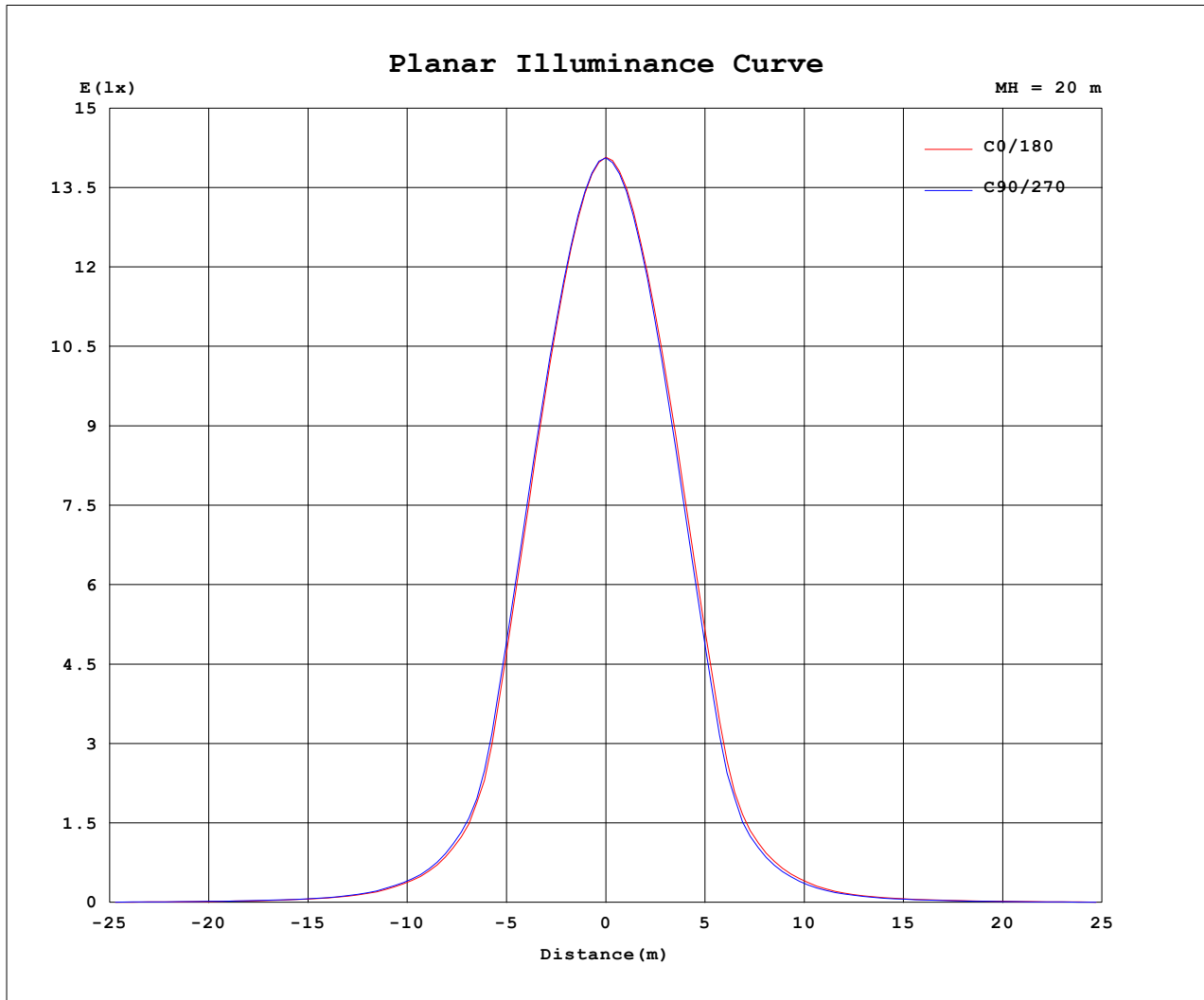
AvgL	cd/m2
L_0~180 (65) av	1233
L_0~180 (75) av	292
L_0~180 (85) av	116
L_90~270 (65) av	1241
L_90~270 (75) av	291
L_90~270 (85) av	108
L_45 (65) av	1216
L_45 (75) av	262
L_45 (85) av	43

Standard: GB/T 29293-2012

C Range: 0 - 360DEG
C Interval: 30.0DEG
Test Speed: HIGH
Temperature: 25.3℃
Operators: zoe
Test Date: 2023-6-5

Range: 0 - 180DEG
Interval: 1.0DEG
Test System: EVERFINE GO-SPEX500_V1 SYSTEM V2.00.461
Humidity: 65.0%
Test Distance: 3.160m [K=1.0000]
Remarks: LAMP: BXRE-30H1000-A-83 Ra: 97
LENS: PM-0132A 24R
DRIVER: RISE DRIVER 350mA
30minutes warm-up

Planar Illuminance Curve



C Range: 0 - 360DEG
 C Interval: 30.0DEG
 Test Speed: HIGH
 Temperature: 25.3 °C
 Operators: zoe
 Test Date: 2023-6-5

Range: 0 - 180DEG
 Interval: 1.0DEG
 Test System: EVERFINE GO-SPEX500_V1 SYSTEM V2.00.461
 Humidity: 65.0%
 Test Distance: 3.160m [K=1.0000]
 Remarks: LAMP: BXRE-30H1000-A-83 Ra: 97
 LENS: PM-0132A 24R
 DRIVER: RISE DRIVER 350mA
 30minutes warm-up

LUMINOUS DISTRIBUTION INTENSITY DATA

Test:U:120.09V I:0.1136A P:13.446W PF:0.9834 Freq:59.98Hz Lamp Flux:1339.9x1 lm		
NAME: 2319.201-H3AM-350	TYPE:	WEIGHT:
SPEC.: 3000K	DIM.:	SERIAL No.: 2306050738
MFR.: RISE	SUR.: 0.002826m2	Shielding Angle:

Table--1

UNIT: cd

C (DEG) (DEG)	0	30	60	90	120	150	180	210	240	270	300	330						
0	5627	5627	5627	5627	5627	5627	5627	5627	5627	5627	5627	5627						
5	4997	5027	5015	5020	5049	5061	5052	5049	5055	5024	5014	4986						
10	3531	3572	3556	3602	3657	3687	3687	3645	3639	3586	3540	3495						
15	1705	1766	1729	1807	1876	1931	1909	1866	1857	1780	1749	1693						
20	598	630	634	644	663	676	656	639	635	605	606	593						
25	267	282	284	286	294	302	291	282	280	261	265	263						
30	126	135	135	137	137	137	134	127	124	119	119	119						
35	66.0	69.1	69.4	69.6	71.0	70.9	69.3	66.5	63.8	61.5	61.6	62.8						
40	39.0	40.5	40.3	41.1	41.5	42.0	41.4	39.8	38.3	38.0	37.2	37.2						
45	24.7	25.9	25.9	26.1	26.9	27.1	26.3	25.9	24.8	24.1	24.2	24.4						
50	17.1	18.2	18.1	18.1	18.3	18.5	17.9	17.6	17.1	16.7	16.4	16.4						
55	10.6	11.2	11.2	11.4	11.6	11.6	11.1	10.6	10.0	9.75	9.89	10.1						
60	4.58	4.91	4.99	5.19	5.36	5.22	4.90	4.56	4.26	4.09	4.18	4.24						
65	1.41	1.41	1.47	1.57	1.62	1.57	1.53	1.44	1.35	1.40	1.39	1.39						
70	0.83	0.85	0.89	0.95	0.95	0.91	0.88	0.85	0.78	0.81	0.80	0.80						
75	0.18	0.21	0.19	0.27	0.27	0.26	0.25	0.21	0.17	0.16	0.14	0.10						
80	0.03	0.02	0.02	0.03	0.02	0.02	0.03	0.02	0.02	0.03	0.01	0.02						
85	0.03	0.01	0.01	0.03	0.01	0.01	0.03	0.02	0.01	0.03	0.01	0.01						
90	0.00	0.00	0.00	0.00	0.00	0.00	0.00	0.00	0.00	0.00	0.00	0.00						
95	0.00	0.00	0.00	0.00	0.00	0.00	0.00	0.00	0.00	0.00	0.00	0.00						
100	0.00	0.00	0.00	0.00	0.00	0.00	0.00	0.00	0.00	0.00	0.00	0.00						
105	0.00	0.00	0.00	0.00	0.00	0.00	0.00	0.00	0.00	0.00	0.00	0.00						
110	0.00	0.00	0.00	0.00	0.00	0.00	0.00	0.00	0.00	0.00	0.00	0.00						
115	0.00	0.00	0.00	0.00	0.00	0.00	0.00	0.00	0.00	0.00	0.00	0.00						
120	0.00	0.00	0.00	0.00	0.00	0.00	0.00	0.00	0.00	0.00	0.00	0.00						
125	0.00	0.00	0.00	0.00	0.00	0.00	0.00	0.00	0.00	0.00	0.00	0.00						
130	0.00	0.00	0.00	0.00	0.00	0.00	0.00	0.00	0.00	0.00	0.00	0.00						
135	0.00	0.00	0.00	0.00	0.00	0.00	0.00	0.00	0.00	0.00	0.00	0.00						
140	0.00	0.00	0.00	0.00	0.00	0.00	0.00	0.00	0.00	0.00	0.00	0.00						
145	0.00	0.00	0.00	0.00	0.00	0.00	0.00	0.00	0.00	0.00	0.00	0.00						
150	0.00	0.00	0.00	0.00	0.00	0.00	0.00	0.00	0.00	0.00	0.00	0.00						
155	0.00	0.00	0.00	0.00	0.00	0.00	0.00	0.00	0.00	0.00	0.00	0.00						
160	0.00	0.00	0.00	0.00	0.00	0.00	0.00	0.00	0.00	0.00	0.00	0.00						
165	0.00	0.00	0.00	0.00	0.00	0.00	0.00	0.00	0.00	0.00	0.00	0.00						
170	0.00	0.00	0.00	0.00	0.00	0.00	0.00	0.00	0.00	0.00	0.00	0.00						
175	0.00	0.00	0.00	0.00	0.00	0.00	0.00	0.00	0.00	0.00	0.00	0.00						
180	0.00	0.00	0.00	0.00	0.00	0.00	0.00	0.00	0.00	0.00	0.00	0.00						

C Range: 0 - 360DEG
C Interval: 30.0DEG
Test Speed: HIGH
Temperature:25.3℃
Operators:zoe
Test Date:2023-6-5

Range: 0 - 180DEG
Interval: 1.0DEG
Test System:EVERFINE GO-SPEX500_V1 SYSTEM V2.00.461
Humidity:65.0%
Test Distance:3.160m [K=1.0000]
Remarks: LAMP:BXRE-30H1000-A-83 Ra:97
LENS:PM-0132A 24R
DRIVER: RISE DRIVER 350mA
30minutes warm-up